

The Kent Compendium of Historic Parks and Gardens for Thanet District



Dalby Square, Margate, Thanet



Dalby Square

Thanet, Kent

INTRODUCTION

STATEMENT OF SIGNIFICANCE

SITE DESCRIPTION

LIST OF FIGURES

FIGURE 1: Boundary map

FIGURE 2: Aerial photograph

FIGURE 3: 1919 Conveyance map

FIGURE 4: Ordnance Survey 1st edn 25" map (1862-1875)

FIGURE 5: Ordnance Survey 2nd edn 25" map (1897-1900)

FIGURE 6: Ordnance Survey 3rd edn 25" map (1907-1923)

FIGURE 7: Ordnance Survey 4th edn 25" map (1929-1952)

FIGURE 8: Plan of Dalby Square enclosure, July 2003 (in December 2003 planning application documents)

FIGURE 9: 'Warrior Crescent and Ethelbert Square' (1872) – engraved vignette, Rock and Co.

FIGURE 10: 'Dalby Square, Margate' (undated) – engraved vignette, J.S. and Co.

FIGURE 11: 'Warrior Crescent, Margate' (1877) – engraved vignette, John Newman and Co.

FIGURE 12: 'Dalby Square, Margate' (1904) – postcard, view from the north-west

FIGURE 13: 'Dalby Square, Cliftonville' (1907) – postcard, view from the north

FIGURE 14: 'MARGATE *Dalby Square* – L.L.' (c1907) – postcard, aerial view from the south

FIGURE 15: 'View from Windsor Hotel, Cliftonville' (c1923) – postcard, aerial view from the south-east

FIGURE 16: 'Hotel Mediterranean', 17-19 Dalby Square (c1975) - postcard

FIGURE 17: Photograph of Hotel Mediterranean, 17-19 Dalby Square (c1975)

- FIGURE 18: Garden enclosure showing top terrace to the south-west, July 2012
- FIGURE 19: Garden enclosure showing second and third terraces to the west, July 2012
- FIGURE 20: Garden enclosure showing third terrace and children's playground to the north, July 2012
- FIGURE 21: Aerial view of garden enclosure (north) from 30 Dalby Square, February 2013
- FIGURE 22: Aerial view of garden enclosure (centre) from 30 Dalby Square, February 2013
- FIGURE 23: Garden enclosure showing top terrace to the south-west, and Dalby Terrace, February 2013
- FIGURE 24: Garden enclosure showing top terrace to the north-east, February 2013
- FIGURE 25: Garden enclosure showing top terrace to the south-east, February 2013

ACKNOWLEDGEMENTS

We are very grateful to Nick Dermott and Tanya Carr at Thanet District Council for their help and support, particularly for providing us with invaluable archive material. We are also indebted to Anthony Lee and Suzannah Foad for giving us access to their research records, and for allowing us to reproduce their images of Dalby Square.

INTRODUCTION

This report was researched and written by volunteers of the Kent Gardens Trust, and was edited by Virginia Hinze.

The extent of the area identified represents the historic boundary of the site, but does not necessarily cover all changes that may have been made to the designed landscape. Further information is available from the contacts listed below.

Thanet District Council,
PO Box 9,
Cecil Street,
Margate,
Kent,
CT9 1XZ
01732 227000
<http://www.thanet.gov.uk>

Kent County Council
Heritage Conservation
Invicta House
County Hall
Maidstone
ME14 1XX
01622 696918
www.kent.gov.uk

Kent Gardens Trust
www.kentgardenstrust.org.uk

STATEMENT OF SIGNIFICANCE

Dalby Square is recommended for inclusion on the local list of heritage assets for the following principal reasons:

Age, rarity and survival: During the Victorian and Edwardian eras, Dalby Square represented an important element in the development of Cliftonville as a fashionable area of Margate. The square, with an enclosure integral to its architectural design, was the only example of its kind built in Cliftonville, and, with Hawley Square, is one of two surviving examples in Margate. Despite physical alterations reflecting changes of use including the construction of tennis courts and, from the 1960s, the building of a car park to the north of the site, the original overall tapered shape of the enclosure is still discernible and the use of perimeter beds has been a constant feature.

Aesthetic value: the C19 distinctive planting layout and pathways were characteristic of garden squares prevalent in fashionable areas of London; it exemplified similar design features being imported to a refined area of a seaside resort, for the enjoyment of residents and wealthy visitors alike.

Evidential value: An extensive archive of lithographic images, photographs and maps from the late C19 and early C20 survives, some of which provide clear evidence of the size and design of the garden enclosure as it was originally laid out. Restoration to this phase would be feasible. The restrictions placed on its use are well-supported by primary evidence from conveyances.

Historic association: notable business entrepreneurs associated with the site include Thomas Dalby Reeve, mayor of Margate from 1873-75, and John Henry Iles who developed Margate's Dreamland amusement park and the Cliftonville Lido. Other acclaimed public figures include: Lucy Anderson, a pianist and tutor to Queen Victoria and her children; the author Dennis Wheatley; and Sir William Treves, eminent surgeon and pioneer of research into tuberculosis.

Social and communal value: historically, the enclosure has benefitted the local community economically by helping to attract visitors to Dalby Square's fashionable hotels, and pupils to its well-regarded private schools; the residents of Dalby Square, from the mid-C19 to the present day, have placed great value on the garden enclosure as an open green space and important social and recreational facility.

SITE DESCRIPTION

KENT
THANET
MARGATE

DALBY SQUARE

TQ 3612 7123

SUMMARY OF THE HISTORIC INTEREST

An enclosed, ornamental, terraced public garden with play area and car park, laid out in the mid-C19 for the occupants of the surrounding terraces; alterations in the late C19, the mid to late C20 and the early C21 included the building of lawn and hard tennis courts, a car park and children's playground and changes to the design and size of the area of ornamental gardens.

CHRONOLOGY OF THE HISTORIC DEVELOPMENT

Dalby Square owes its name and origins to the business entrepreneur, Thomas Dalby Reeve (1814-1875), the founder of Reeves Mineral Water Manufacturers, and mayor of the seaside town of Margate between 1873 and 1875. During the early 1860s, Dalby Reeve acquired 2.5ha of arable land from a John Slater Harrison (tithe map and apportionment, and 2nd schedule to 1919 conveyance) and began the large-scale development of Cliftonville, including Dalby Square's large three and four storey residential terraces and c0.3ha garden enclosure (1919 Conveyance map, Fig. 3).

As part of the legal agreements governing change of ownership from 1863 onwards, detailed restrictions were placed on the use of the enclosure, in perpetuity. Amongst other things, it was stipulated that: no bathing facilities should be built on the land (thus protecting the interests of the owner of Clifton Baths, Margate); no buildings of any kind should be erected save for a boundary fence not exceeding five feet in height; and that the enclosure should remain an ornamental garden (abstract of title, 6th March 1920, full text at annexe A).

The first detailed illustrative recording of the enclosure, in 1872, shows the garden almost entirely laid to lawn, with open vertical paling forming a boundary (engraving by Rock & Co. Ltd, Fig. 9). Later illustrations, during the mid to late 1870s, show axial pathways introduced, along with circular beds of ornamental planting and young trees and shrubs placed at intervals along the boundary. The Newman engraving shows an open entrance to the west, indicating access to the general public (J.S and Co. (Kershaw), and Newman, Figs. 10 and 11).

Throughout the 1880s and 1890s, evidence suggests that large areas of the enclosure were laid out as lawn tennis courts (annexe B). In 1895, although still part of the estate of Thomas Dalby Reeve, it was decreed that "the enclosure

known as Dalby Square [shall be] let to the tenants of surrounding houses” (Indenture 12th June 1895). Photographic images of Dalby Square from 1904 and 1907 (Figs. 12 and 13) show two lawn tennis courts on the south side, adjacent to the south-facing terrace known as Warrior Crescent, and one further north. The enclosure is divided by lateral fencing (also clearly marked on the 3rd edition OS map) with a marked incline leading to a croquet lawn to the north. Figure 12 clearly shows that hedging plants have grown to begin forming an inner boundary to the enclosure, immediately inside the palings.

In August 1907, the enclosure was put up for sale at auction by order of the trustees of the late Thomas Dalby Reeve’s estate. Although the existence of tennis courts is not shown on the 3rd edition OS map (1907- 1923), sales particulars state that the freehold enclosure was let as a tennis and croquet ground for public and private use, providing a rental income for the owner in excess of £50 per annum. A plan of the enclosure (described as Lot 3) accompanying the sales particulars, also shows the precise dimensions thus: 455 feet long (to the east), 462 feet long (to the west), 148 feet 8 inches wide (to the south), and 44 feet wide to the north (sales particulars 26th August 1907).

By 1911, further photographic evidence shows a mature hedge alongside the boundary palings, and that the enclosure was encircled immediately outside by the square’s pavements and intermittent street lighting columns (Lee).

During the prosperous Victorian and Edwardian eras, the buildings in Dalby Square were used largely as hotels and private schools and were noted for their association with certain acclaimed public figures. These included: Lucy Anderson, a pianist and tutor to Queen Victoria and her children, who owned number 7 Dalby Square; the author Dennis Wheatley (1897-1977) who attended school at number 32 (Skelsmergh School); and Sir William Treves, eminent surgeon and pioneer of research into tuberculosis, who later lived at number 32 (Foad).

In 1919, the enclosure was again put up for sale by the trustees and sold to a business entrepreneur, John Henry Iles (1871-1951). In the same year, Iles purchased the sites of an amusement park (formerly partly owned by Dalby Reeve and his estate) and Clifton Baths, which he developed to become the Dreamland amusement park and the Cliftonville Lido respectively. The conveyance for the 1919 sale repeats the stipulations about the use of the enclosure drawn up in 1863 and 1874, and contains the restriction that the purchaser should ‘keep and maintain the said square as an ornamental enclosure and properly fenced in, and that no building or erection of any kind shall be erected, built or placed on the said land...’ (1919 conveyance). By 1920, signs of neglect are visible in some of the dilapidated boundary fencing (Lee).

The enclosure continued to be altered and by 1923 further photographic evidence shows a formal layout of the tennis courts, enclosed by high-wire fencing. There were five hard tennis courts on three terrace levels, with a small pavilion building towards the north-east corner of the enclosure (postcard c1923

- Lee, Fig.15 and 4th edition OS map) the whole of which is still bounded by mature hedging, with vertical paling outside.

In 1934, John Henry Iles sold the enclosure to Margate Estates Company Limited (later to become, in 1975, Associated Leisure Company Limited) who owned it until 1976 when it was sold to Thanet District Council (Land Registry document). Throughout most of this period the enclosure continued to be used for tennis, but by the early to mid-1960s, the northern section was converted to a car park (planning application, 1956), reducing the area laid out as garden from c0.3ha to 0.2ha, with designated areas for car parking around the outside of the new perimeter wall (annexe B).

By the mid-1970s, photographic evidence shows that the southern and central areas of the enclosure had reverted from tennis courts to an ornamental garden, with densely planted circular beds and defined areas of lawn (images of Hotel Mediterranean – Foad, Figs. 16 and 17).

Following a successful planning application by the Dalby Square Project in December 2003, further developments took place c2005, including a re-design of the ornamental garden and the construction of a children's playground on part of the car park to the north (planning application 2003).

In July 2010, the whole of Dalby Square, and part of the surrounding area, was designated a Conservation Area which facilitated a bid to the Heritage Lottery Fund. In December 2012, Thanet District Council secured funding of £1.9 million from the Heritage Lottery Fund, through their Townscape Heritage Initiative, for a restoration project in Dalby Square. The five-year project is aimed at improving and re-inforcing the historic character of Dalby Square, including its public spaces.

Today (2013), the south terrace is occupied as social housing and the east and west terraces are mainly privately-rented accommodation. The enclosure remains in the ownership of Thanet District Council which is responsible for its upkeep, assisted by members of the Dalby Square Residents' Association.

SITE DESCRIPTION

LOCATION, AREA, BOUNDARIES, LANDFORM, SETTING

Dalby Square lies on the western fringes of the C19 development known as Cliftonville, situated on the North Kent coast, 0.75km east of Margate Old Town. Cliftonville itself is defined by tall, sea-facing terraced houses and hotels, and lower-level terraced properties inland.

The c0.3ha elongated and tapered enclosure lies on gently northward-sloping ground and is bordered by the B2051 Margate to Northdown road immediately to the north. It is surrounded on three sides: to the east and the west by largely 3 and 4 storey Victorian terraced houses, and to the south by C21 terraced houses with car-parking spaces surrounding the outside perimeter of the enclosure. The boundary of the southern, 0.2ha garden area is enclosed mainly

by low, randomly-coursed stone walls, while the northern c0.1ha area, containing a crescent-shaped children's playground and a car park beyond, is surrounded and segregated from the garden area by steel railings.

The enclosure's original boundaries comprised vertical palings (Rock/Kershaw engravings 1872 and 1877) and, by 1904, hedging had grown to form an inner boundary immediately inside the palings (postcard, Fig. 12). By 1923, photographic evidence shows that some of the palings had become dilapidated and were subsequently removed leaving only the hedging to form parts of the boundary (postcard, Fig.15). The construction of car-parking bays around the perimeter in the 1960s led to a slight narrowing of the original boundary line. It is likely that the current perimeter walls were built at the same time.

The square lies open to the north, with views across a putting green and Newgate Lower Promenade, to the North Sea beyond.

ENTRANCES AND APPROACHES

Dalby Square can be approached from four directions: from the north-west from Ethelbert Terrace, on the B2051, and from the north-east from Ethelbert Crescent, also on the B2051. It is approached from the south-west from Dalby Road and from the south-east by Arthur Road. Both these roads link the square with Northdown Road (part of the B2055 Margate town road from High Street to Cliff Terrace), some 120m to the south.

GARDENS AND PLEASURE GROUNDS

The central and southern sections of the enclosure occupy the main area of designed gardens. These, which were laid out in the mid C20 to replace the former tennis courts, are divided into three descending levels of terraces which are mainly laid to lawn, bordered and separated by small trees and shrubs. The boundaries of the garden are formed largely by low walls of randomly-coursed stone, flanked by 3m wide perimeter borders planted with a variety of trees, shrubs and ornamental plants, including spruce, silver birch, pittosporum, buddleia and phormium. Two-metre wide gravel paths encircle and intercept the three terraces within the enclosure. Lamp posts and metal benches are placed at intervals on the perimeter paths.

The far south end of the enclosure is laid out as a crescent-shaped tarmac terrace, inset with two small areas of lawn, and bordered by a 1m high brick wall with a concrete parapet. Central steps descend northwards, supported by 1m high brick walls on each side, with concrete parapets flanked by concrete pillars bearing ornamental spheres. Below the steps, to the east and west, lie ornamental flower beds. There are two further, open, entrances to the garden which are paved with stone and located at the south-east and the south-west corners.

All three entrances descend northwards to the first garden terrace. This is rectangular-shaped, with a 2m wide central gravel pathway, lined on each side with an avenue of five prunus saplings. A mature lime tree stands in the south-

east corner of the terrace. To the east and west of the path lie two large areas of undulating lawn 340 metres square; the terrace is terminated to the north by a curved gravel path edged with concrete paving.

Access to the second terrace from the west is via another set of concrete steps, descending northwards, again supported by a 1m high brick wall with a concrete parapet flanked by concrete pillars bearing ornamental spheres. Access to the second terrace from the east is via a sloping gravel path. This c175 square-metre rectangular-shaped area is also mainly laid to lawn with a border of mixed plants, including phormium and a variety of grasses, running from east to west on its southern border. The second terrace is also terminated by a curved gravel path to the north, edged with concrete paving.

The dome-shaped, c255 square-metre third terrace is also accessed from the west via a further set of steps, of a similar design to the second set, but with one ornamental sphere missing, and via a sloping gravel path from the east. It is almost entirely laid to lawn, bordered to the south by a bed of mixed shrubs and herbaceous perennials. To the north, the gravel perimeter paths follow the shape of the dome and meet in the middle. From here, a single axial path leads northwards, intersecting two segments of lawn and terminating at a large circular area (c136 square-metres) of brick paving bordered by gravel. Radial gravel pathways lead to open entrances to the garden on both the west and east sides.

To the north, the garden terminates with open steel railings set on a 1m high brick wall and with a central gateway leading to the children's playground, and car park beyond.

REFERENCES

Books and articles

Friends of Margate Cemetery, *St John's Cemetery Margate, 1856-2006, 150th Anniversary Commemoration* (2006)

N Barker, A Brodie, N Dermott, L Jessop, G Winter, *Margate's Seaside Heritage* (English Heritage, 2007)

A Kay, *Margate* (Francis Frith Collection, 2001)

S Foad, *Dalby Square, Cliftonville* (Margate Civic Society newsletter no. 361, Autumn 2010)

A Lee, John Robinson and Janet Robinson, *Margate Through Time* (Amberley Publishing, 2012)

A Oldfield (Ed), *Saving Thanet: The Architecture of Kent's Forgotten Coast* (SAVE Britain's Heritage, 2011)

Maps

Tithe map and apportionment (11th June, 1840)

Ordnance Survey map: 25" to 1 mile

1st edition (1862-75)

2nd edition (1897-1900)

3rd edition (1907-1923)

4th edition (1929- 1952)

Illustrations

A. Lee, Margate in maps and pictures, Margate Local History website:

- engraved vignette no. 6535, Rock & Co. London, 1872
- engraved vignette no 2227, J.S and Co. – undated
- engraved vignette, John Newman and Co, December 11th, 1877
- postcards dated 1904, 1907, 1911, and 1920

Images from research into the history of Dalby Square – Suzannah Foad
(Thanet District Council)

Site survey photographs (2013)

Archival items

Indenture, disposal of assets, between Herbert Dalby Reeve and Frederick Parker and Another, 12th June 1895 (KHLC ref. EK/U244/1)

Sales particulars, 26th August 1907 Cockett and Henderson auctioneers (KHLC R/U1/E1/295)

Conveyance between Frederick Parker and John Henry Iles, showing plan and measurements of Dalby Square, 18th December 1919 (in particular, the second schedule, first part, contains details of ownership of the Dalby Square garden enclosure between 1863 and 1919) (Thanet District Council)

Abstract to the title of freehold premises, 33, 34, 35 Dalby Square, known as the Hotel Spendide, 6th March 1920 (in particular, the second schedule refers to the legal agreements governing the use of the garden enclosure) (Thanet District Council)

Conveyance between George Hester (seller) and the Cliftonville Improvement Syndicate, 6th March 1920 (Thanet District Council)

Conveyance, John Henry Iles to Clifton Baths, Margate – a piece of freehold land known as Dalby Square, 13th April 1931 (Thanet District Council)

Contract for the sale and purchase of Dalby Square between Associated Leisure Entertainments Limited and Thanet District Council, 21st October 1975 (Thanet District Council)

HM Land Registry, Land Certificate, title no. K438355, registered 28th January 1976 and Charges Register (Thanet District Council)

Notes from research into the history of Dalby Square – Suzannah Foad (Thanet District Council)

Planning application, dated 16th December 2003, ref. F/TH/03/1421, agreed 28th January 2004, (Thanet District Council website)

Planning application, dated 16th December 2003, ref. F/TH/03/1421: history of related applications including ES/1/55/191A, the building of car park on land in Dalby Square, granted 5th March 1956 (Thanet District Council)

Dalby Square Development, Margate, Design and Access Statement Revision A, 21st July 2010, Churchill Hui (contained in planning application F/TH/10/0581 dated 30th July 2010, agreed 19th November 2010 (Thanet District Council website)

Beverley and Paul Howarth

Cilla Freud (research contributor)

Virginia Hinze (editor)

Annexe A - Legal agreements relating to the Dalby Square garden enclosure

Text of covenant contained in an indenture dated 24th August 1863

That the said Thomas Dalby Reeve, his heirs or assigns, should not nor would at any time thereafter erect or form or permit or suffer to be erected or formed upon the said land and hereditaments thereby conveyed or any part thereof, any Baths or Bathing Establishment of any kind whatsoever, or construct or suffer to be constructed any road or way from the said land to the seashore or suffer to be done exercised or carried on upon the said land or any part thereof or in the messuages or dwelling houses erections and buildings which might be erected and built thereon any noisy or offensive or other trade or dealing or be party or suffer any act or thing which might tend to the deterioration in value of the said Clifton Baths and other property marked "A" upon the Plan drawn thereon or which might be or grow to any annoyance, damage or inconvenience to the occupiers thereof without the consent in writing of John Harvey Boys, his heirs or assigns.

And it was thereby agreed and declared between the said T.D. Reeve and J. H. Boys that the covenants therein before contained on the part of the said T.D. Reeve should as far as might be in law or in equity run with the said land, hereditaments and premises thereby conveyed so that the same should at all times thereafter retain and be subject thereto and that the said Thomas Dalby Reeve, his heirs and assigns and all future Purchasers and owners of the said land and hereditaments should so far as the rules of law and equity would permit be charged and affected by such covenants. And also that the said covenants should run with the said Clifton Baths and other property marked "A" upon the said plan and should pass therewith and that the said John Harvey Boys his heirs and assigns owner or owners of the said Baths should for ever have the benefit thereof to compel and enforce the observance and performance of the said covenants on the part of the said T.D. Reeve and his heirs and assigns to be observed performed fulfilled and kept.

Text of covenant contained in the indenture dated 7th October 1874

Covenant by James Purdy for himself his heirs etc with the said T.D. Reeve his heirs and assigns. That no building other than a boundary fence not exceeding 5ft in height should be erected at any time thereafter on the said piece of land thereby granted and conveyed or intended so to be between the building line marked in the Plan drawn thereon and the road boundary and that no shop warehouse factory or licensed house for the sale of beer and spirituous liquors should at any time thereafter be erected nor any such business carried on in any such buildings on the said piece of land.

Covenant also by the said T.D. Reeve that he his heirs etc should not and would not at any time thereafter build or set up or place or permit to be set up or placed upon any part of the land coloured green in the said Plan lying immediately in front of the said piece of land by that indenture conveyed, any building erection of things whatsoever other than and except chairs seats trees

shrubs or any open fence not exceeding 5ft from the surface of the ground there to enclose the same and also should not at any time put or place any manure or rubbish in or upon any part of the said piece of land coloured green save only as a top dressing, or use or allow the same to be used as or for a drying ground, it being intended that the last mentioned piece of land should be used as or for a pleasure ground only.

Text in conveyance dated 18 December 1919 between (1) Frederick Parker and Arthur Reeve (2) Jane Parker and others, and (3) John Henry Iles (Purchaser)

And the Purchaser (with the object and intent of affording the parties hereto of the first and second parts their heirs, executors, administrators and assigns a full and sufficient indemnity but not further or otherwise) hereby for himself his heirs and assigns covenants with the said parties, their heirs and assigns to keep and maintain the Square as an ornamental enclosure and properly fenced in and that no building or erection of any kind shall be erected, built or placed on the land and nothing shall be done or permitted upon the said premises which may tend to the annoyance or disturbance of the owners and occupiers of hereditaments surrounding the Square or to the deterioration of property there.

Text in transfer of land dated 14th January 1976 by Associated Leisure Entertainments Ltd (Vendor) to Thanet District Council

The Council hereby covenants with the Vendor for itself and successors in title that no advertisement, poster, advertisement hoarding or other erection shall at any time be exhibited, erected, placed or suffered to be on any part of the land hereby transferred for the purpose of exhibiting any advertisement or notice other than such that shall relate to selling or letting of the land transferred and no advertisement or notice other than as aforesaid shall at any time be fixed to or exhibited upon any part of the said land.

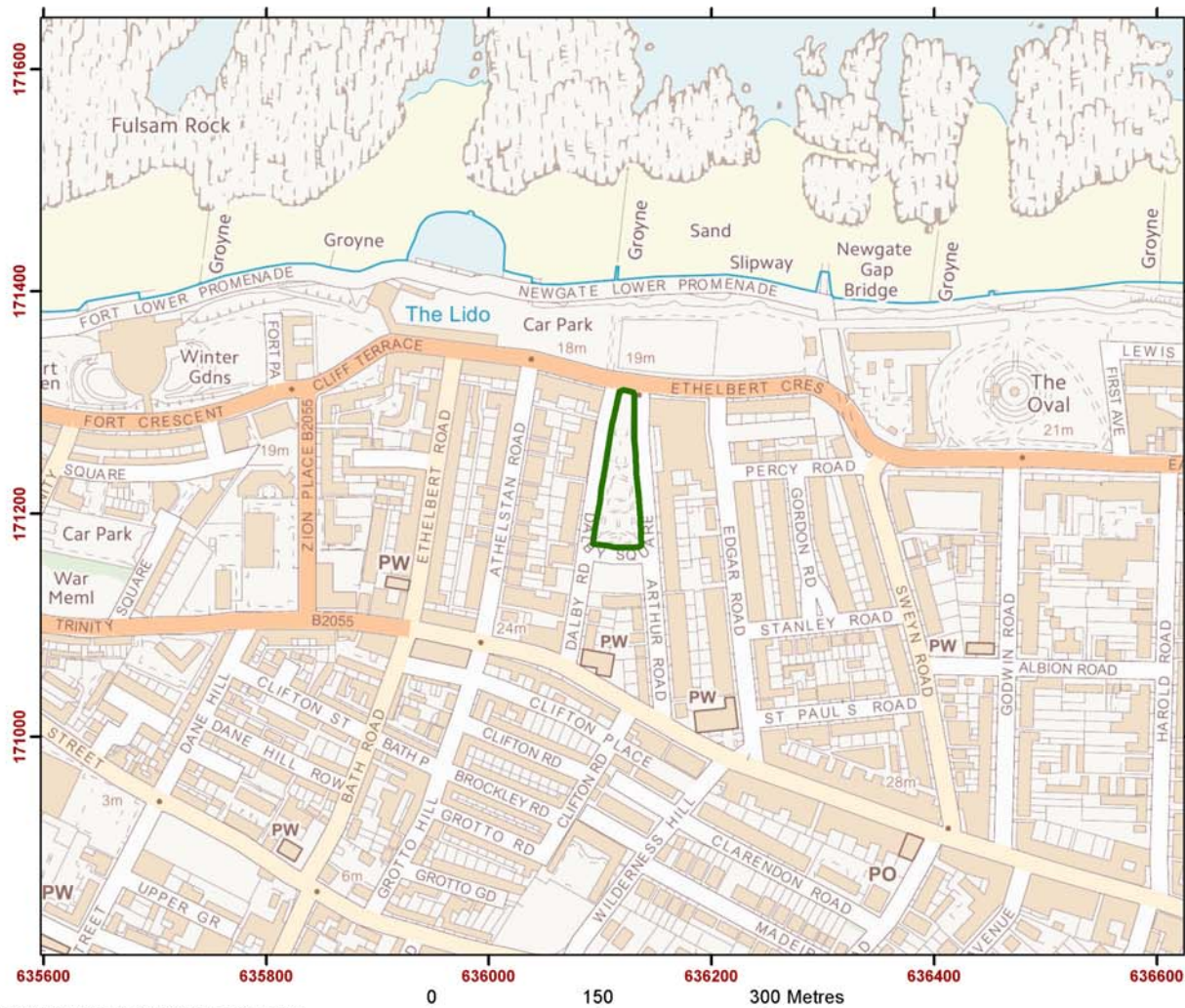
Annexe B - Developments in the use of Dalby Square garden enclosure

Date	Source	Description
1872	Engraved vignette by Rock (A. Lee)	Shows enclosure laid to lawn
Mid 1870s	Engraved vignette by J.S.& Co. aka Kershaw (A. Lee)	Shows designed ornamental garden
1877	Engraved vignette by Newman (A. Lee)	Shows designed ornamental garden
1882	The Standard - 6 th July 1882 (S.Foad)	Oxford House School, 27-28 Dalby Sq. Advertisement refers to 'tennis lawn'
1885	Kelly's Directory (S. Foad)	Lists a lawn tennis club at Dalby Square
1886	The Standard – 1886 (S.Foad)	Severn House Hotel, 3-5 Dalby Sq. Advertisement mentions 'tennis'
1886	(S.Foad)	Palmer House School, 16 Dalby Sq. Advertisement refers to 'tennis courts'
1890	Kebles Gazette (S.Foad)	Huntly House, 33 Dalby Sq. Tennis mentioned in advertisement
1898	Kelly's Directory (S.Foad)	Lists a lawn tennis ground at Dalby Square
1904-11	Various postcards (A.Lee)	Show the enclosure used for tennis and croquet and the development of the hedging as an inner boundary
1907	Sales particulars – 26 th August 1907	State that the freehold enclosure was let as a tennis and croquet ground, providing an income in excess of £50 per annum
1912	Belgrave Hotel [1912 guide] (A.Lee)	Describes the Belgrave Hotel facing tennis courts and a croquet lawn
c1912	Windsor Hotel [guide] (A.Lee)	Shows the top two terraces given over entirely to tennis courts
1914	Thanet Gazette (S.Foad)	Sultan House, ladies boarding school, 19 Dalby Sq. mentions lawn tennis
1920	The Times, 12 th August 1920 (S.Foad)	States that 20 Dalby Sq. is situated opposite tennis courts
1921	Elysee Hotel, 33-35 Dalby Sq. Sales particulars, 8 th August 1921 (S.Foad)	Sales particulars note that the hotel overlooks tennis courts and bowling green
Early 1920s	Various postcards (A.Lee, S.Foad)	Show the development of hard tennis courts, enclosed by high-wire fencing
1928	Hotel Splendide, 33-35 Dalby Sq. Sales particulars, 27 th August 1928 (S.Foad)	Sales particulars state that hotel faces public tennis courts
1929-52	4 th edition OS map	Shows tennis courts on three terraces and a small building to the north-east
1950	1950 Margate Guide (S. Foad)	Cheddar House Hotel, 2-4 Dalby Sq. Advertisement refers to 'five excellent

		hard tennis courts opposite the hotel'
1950s	Various advertisements (S. Foad)	Verify tennis courts are still there.
1966	1966 Margate guide (S. Foad)	Cheddar House Hotel, 2-4 Dalby Sq. Photograph depicts tennis being played - advertisements refer to 'large car parks and excellent hard tennis courts opposite the hotel'
1975	1975 Margate guide (S. Foad)	Cheddar House Hotel, 3-4 Dalby Sq. Advertisements refer to two large car parks opposite the hotel (i.e. to the north of the enclosure) - no reference to tennis courts
Mid 1970s	Postcard image, franked 1975 but date of publication could be earlier. (S. Foad)	Hotel Mediterranean, 17-19 Dalby Sq. Various views on the postcard show that large parts of the garden enclosure have been re-designed and restored as a pleasure garden, with circular ornamental beds and areas of lawn - no evidence of any tennis courts remaining

Kent Compendium of Historic Parks & Gardens – 2013 review of Dalby Square, Margate

Fig. 1 Boundary map



Dalby Square, Margate

Address:
Dalby Square
Margate
Thanet
Kent

Map centred on NGR:
636119 171229

Report completed: June 2013

Legend

Boundary

N

Produced by the KCC Heritage Conservation Group

This map is based upon Ordnance Survey material with the permission of Ordnance Survey on behalf of the Controller of Her Majesty's Stationery Office (C) Crown Copyright. Unauthorised reproduction infringes Crown Copyright and may lead to prosecution or civil proceedings. 100019238. 2007

Kent Compendium of Historic Parks & Gardens – 2013 review of Dalby Square, Margate

Fig. 2 Aerial photograph (2008)




**Dalby Square,
Margate**


Address:
Dalby Square
Margate
Thanet
Kent


Map centred on NGR:
636119 171229


Report completed: June
2013


Legend

 Boundary







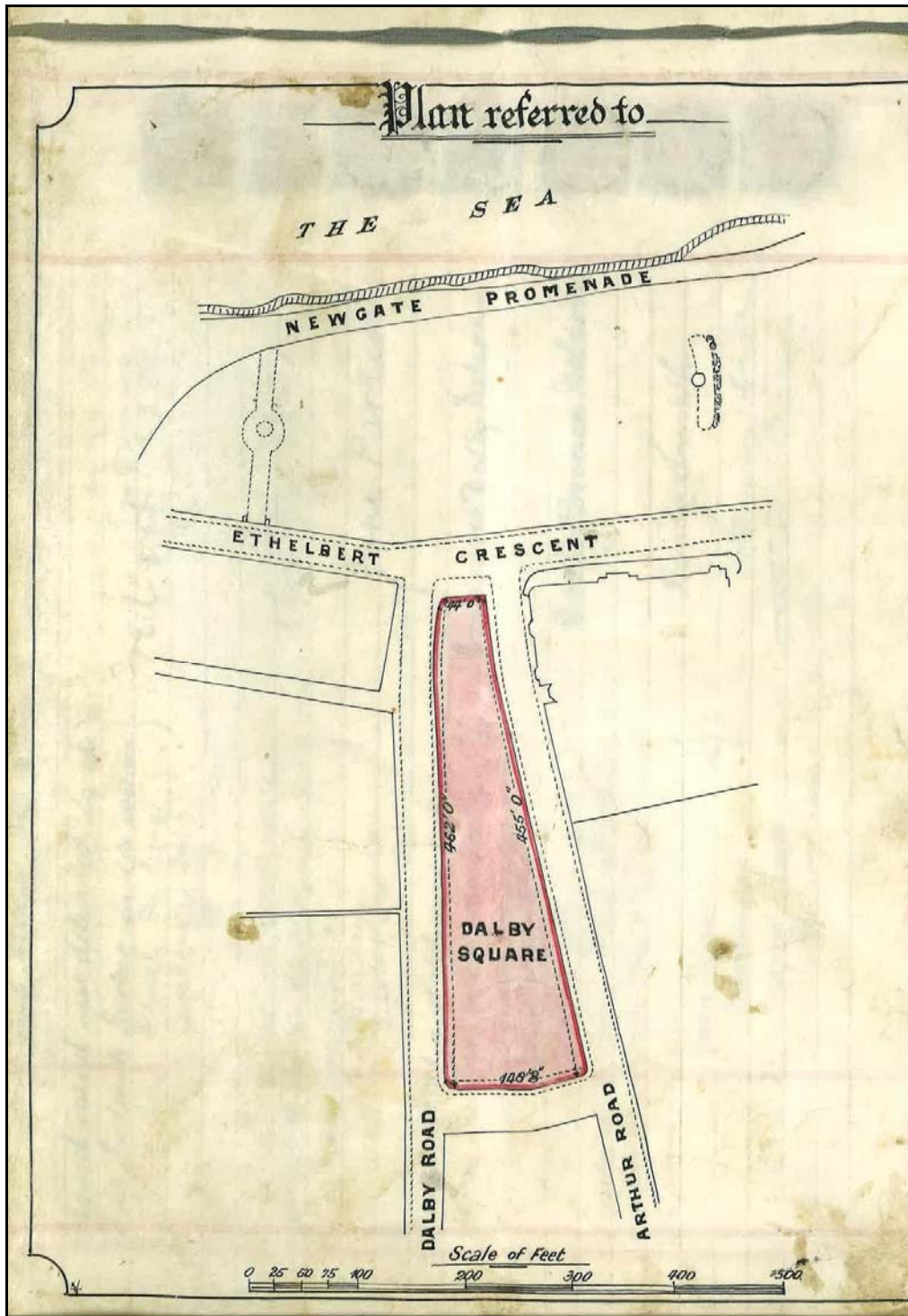


Produced by the KCC Heritage Conservation Group

This map is based upon Ordnance Survey material with the permission of Ordnance Survey on behalf of the Controller of Her Majesty's Stationery Office (C) Crown Copyright. Unauthorised reproduction infringes Crown Copyright and may lead to prosecution or civil proceedings. 100019238. 2007

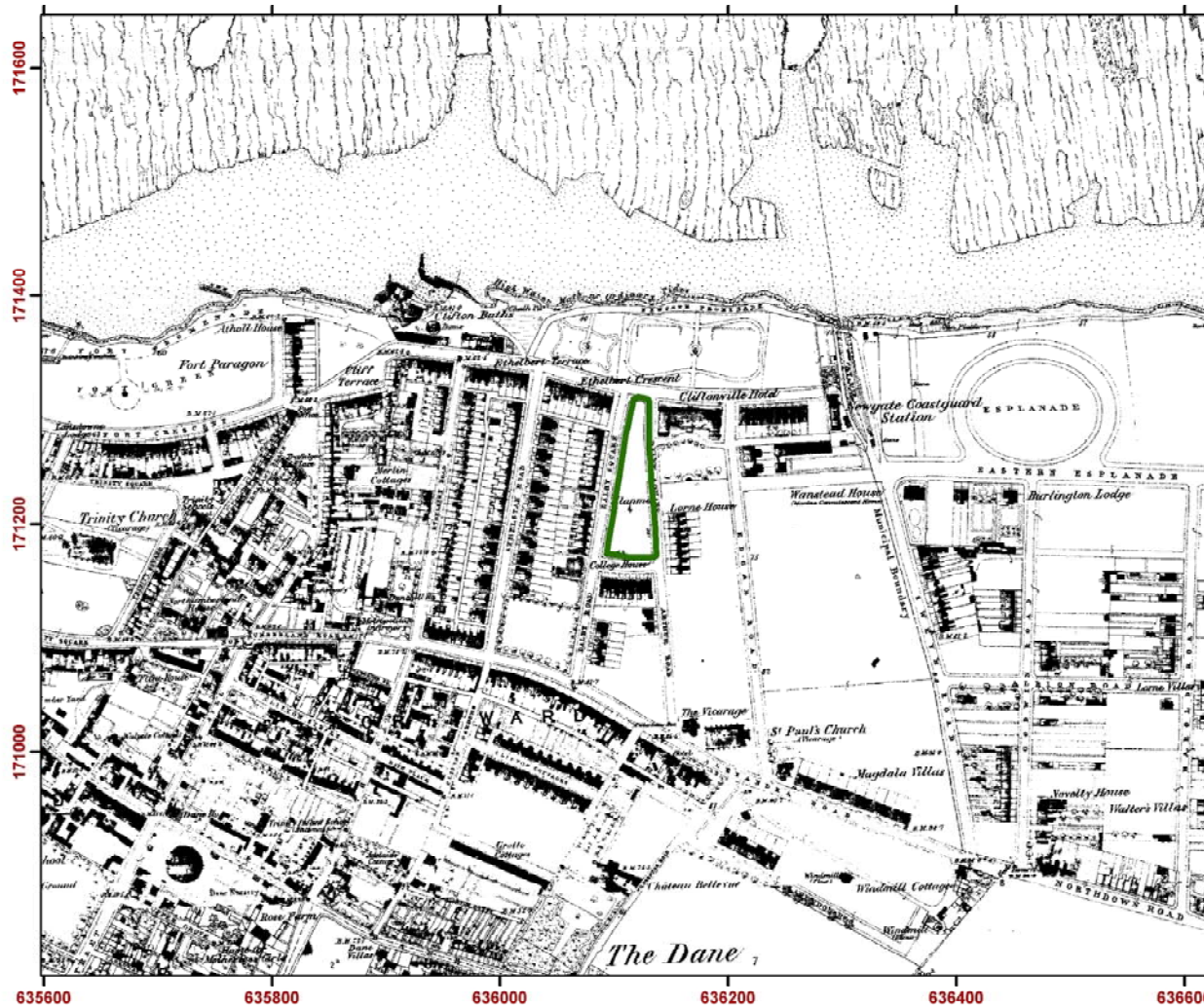
Kent Compendium of Historic Parks & Gardens – 2013 review of Dalby Square, Margate

Fig. 3 1919 Conveyance map



Kent Compendium of Historic Parks & Gardens – 2013 review of Dalby Square, Margate

Fig. 4 Ordnance Survey 1st edn 25" map (1862-1875)



Dalby Square, Margate

Address:
Dalby Square
Margate
Thanet
Kent

Map centred on NGR:
636119 171229

Report completed: June
2013

Legend

 Boundary

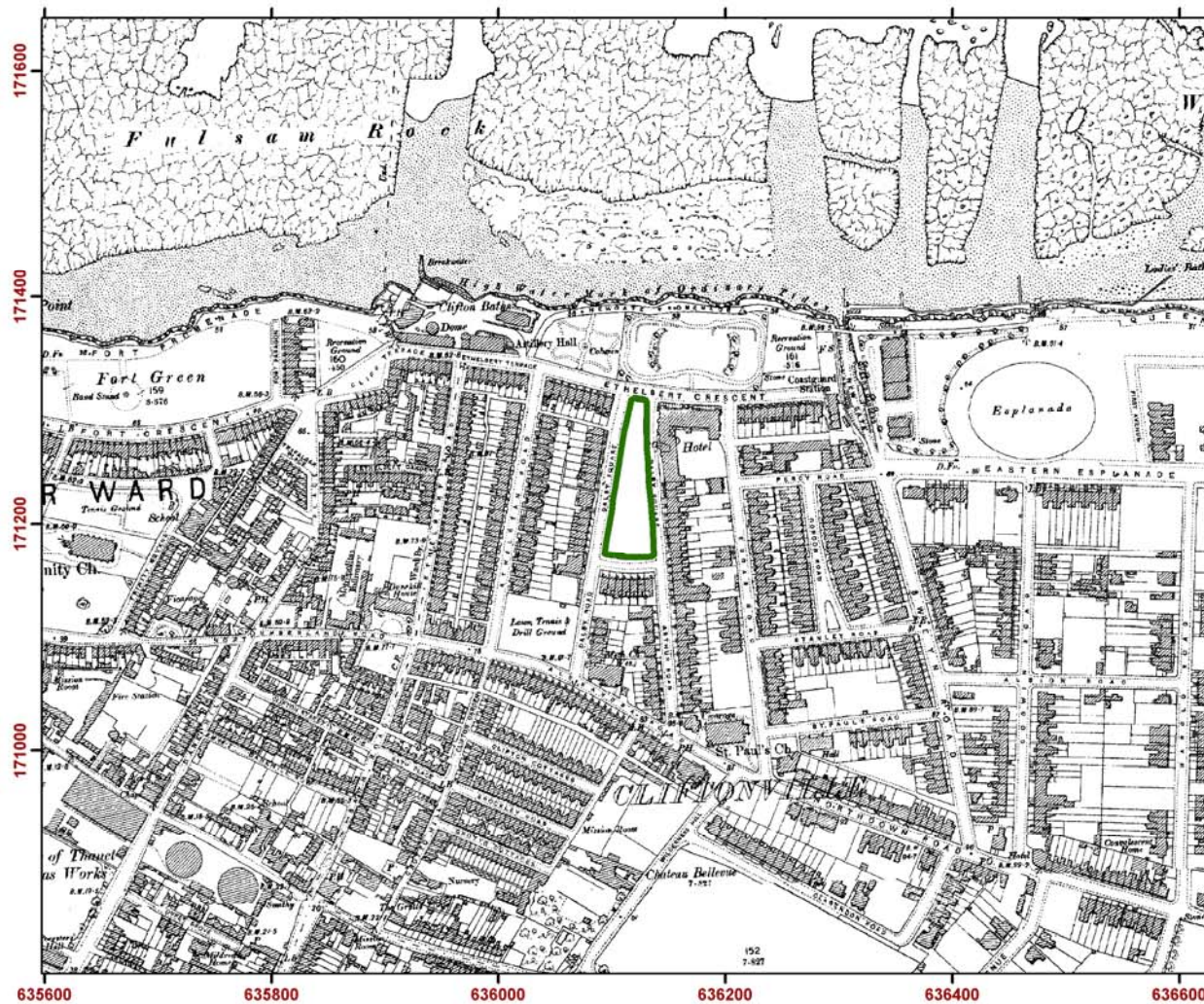


Produced by the KCC Heritage Conservation Group

This map is based upon Ordnance Survey material with the permission of Ordnance Survey on behalf of the Controller of Her Majesty's Stationery Office (C) Crown Copyright. Unauthorised reproduction infringes Crown Copyright and may lead to prosecution or civil proceedings. 100019238. 2007

Kent Compendium of Historic Parks & Gardens – 2013 review of Dalby Square, Margate

Fig. 5 Ordnance Survey 2nd edn 25” map (1897-1900)



**Dalby Square,
Margate**

Address:
Dalby Square
Margate
Thanet
Kent

Map centred on NGR:
636119 171229

Report completed: June
2013

Legend
 Boundary

N



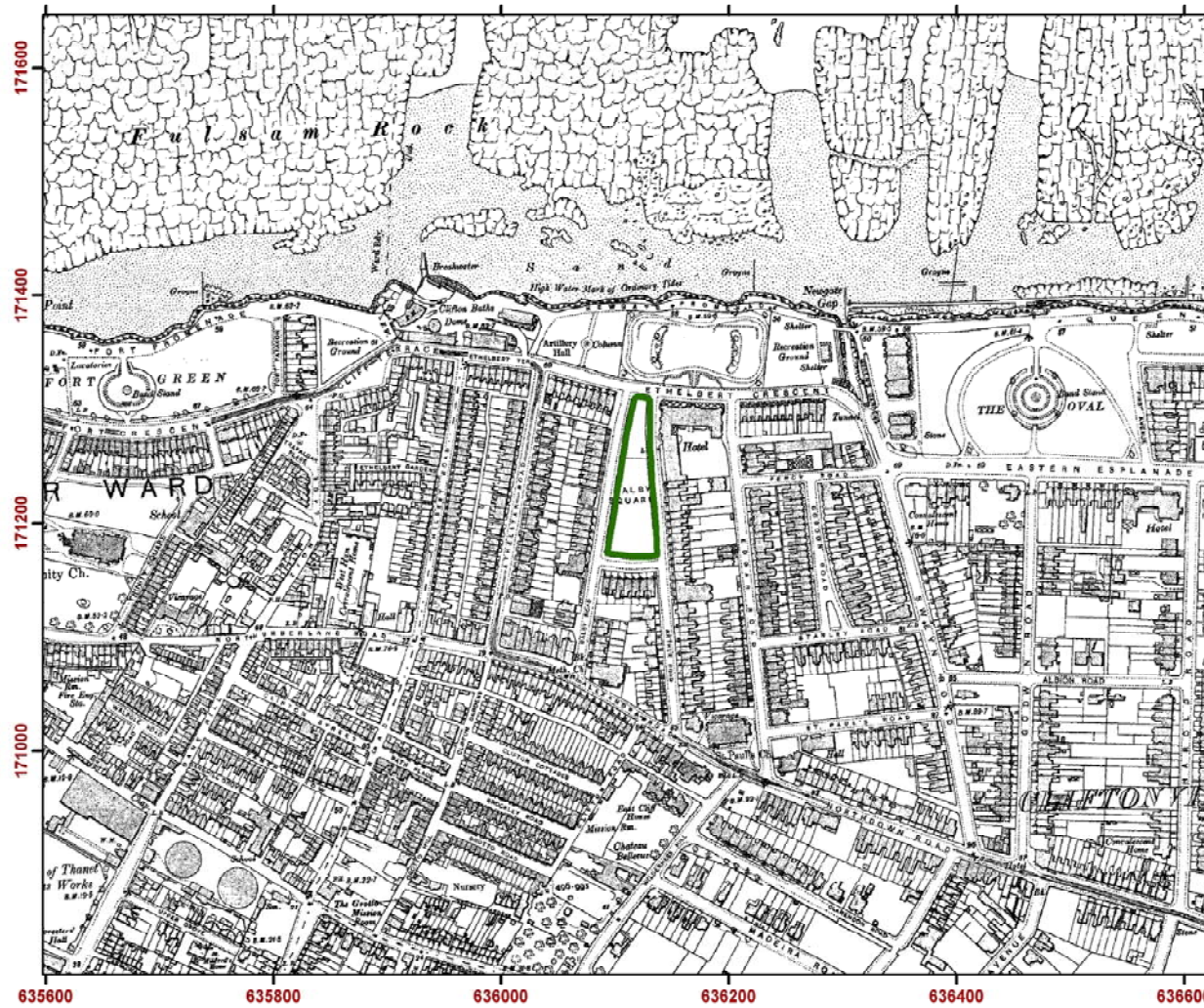


Produced by the KCC Heritage Conservation Group

This map is based upon Ordnance Survey material with the permission of Ordnance Survey on behalf of the Controller of Her Majesty's Stationery Office (C) Crown Copyright. Unauthorised reproduction infringes Crown Copyright and may lead to prosecution or civil proceedings. 100019238. 2007

Kent Compendium of Historic Parks & Gardens – 2013 review of Dalby Square, Margate

Fig. 6 Ordnance Survey 3rd edn 25" map (1907-1923)



**Dalby Square,
Margate**




Address:
Dalby Square
Margate
Thanet
Kent

Map centred on NGR:
636119 171229

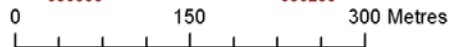
Report completed: June
2013

Legend
 Boundary

N

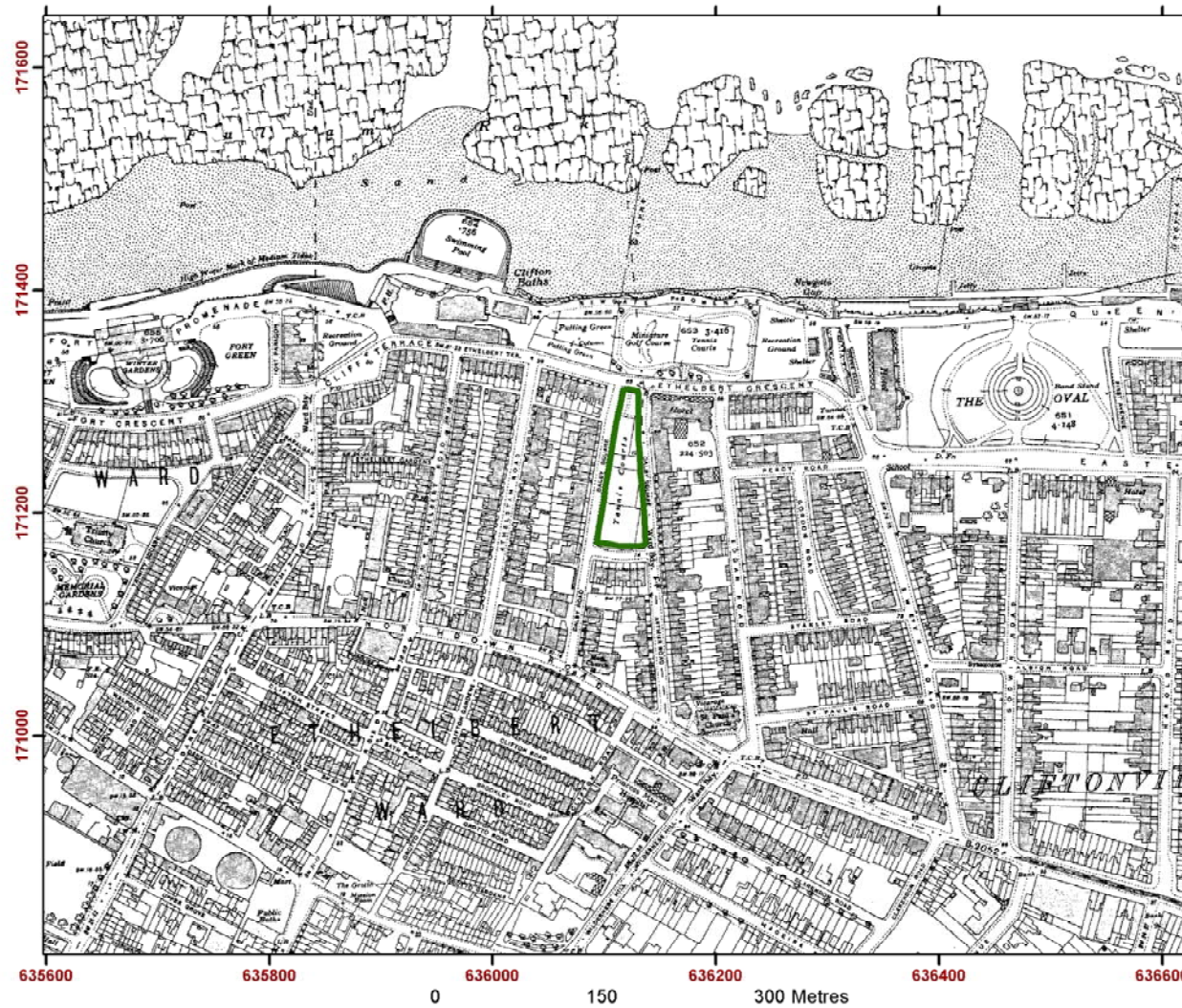
Produced by the KCC Heritage Conservation Group



This map is based upon Ordnance Survey material with the permission of Ordnance Survey on behalf of the Controller of Her Majesty's Stationery Office (C) Crown Copyright. Unauthorised reproduction infringes Crown Copyright and may lead to prosecution or civil proceedings. 100019238. 2007

Kent Compendium of Historic Parks & Gardens – 2013 review of Dalby Square, Margate

Fig. 7 Ordnance Survey 4th edn 25” map (1929-1952)



Dalby Square, Margate

Address:
Dalby Square
Margate
Thanet
Kent

Map centred on NGR:
636119 171229

Report completed: June
2013

Legend

 Boundary

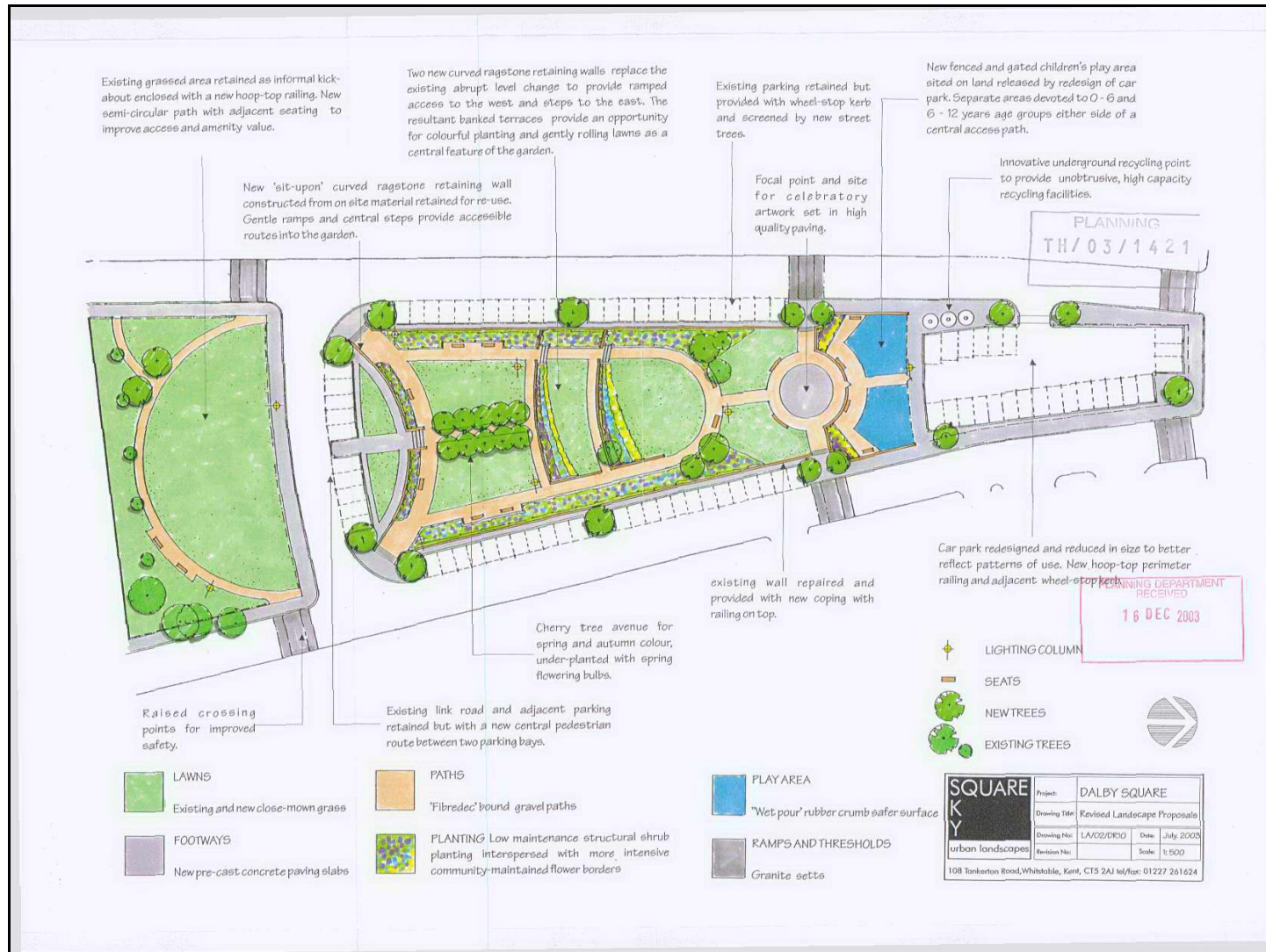


Produced by the KCC Heritage Conservation Group

This map is based upon Ordnance Survey material with the permission of Ordnance Survey on behalf of the Controller of Her Majesty's Stationery Office (C) Crown Copyright. Unauthorised reproduction infringes Crown Copyright and may lead to prosecution or civil proceedings. 100019238. 2007

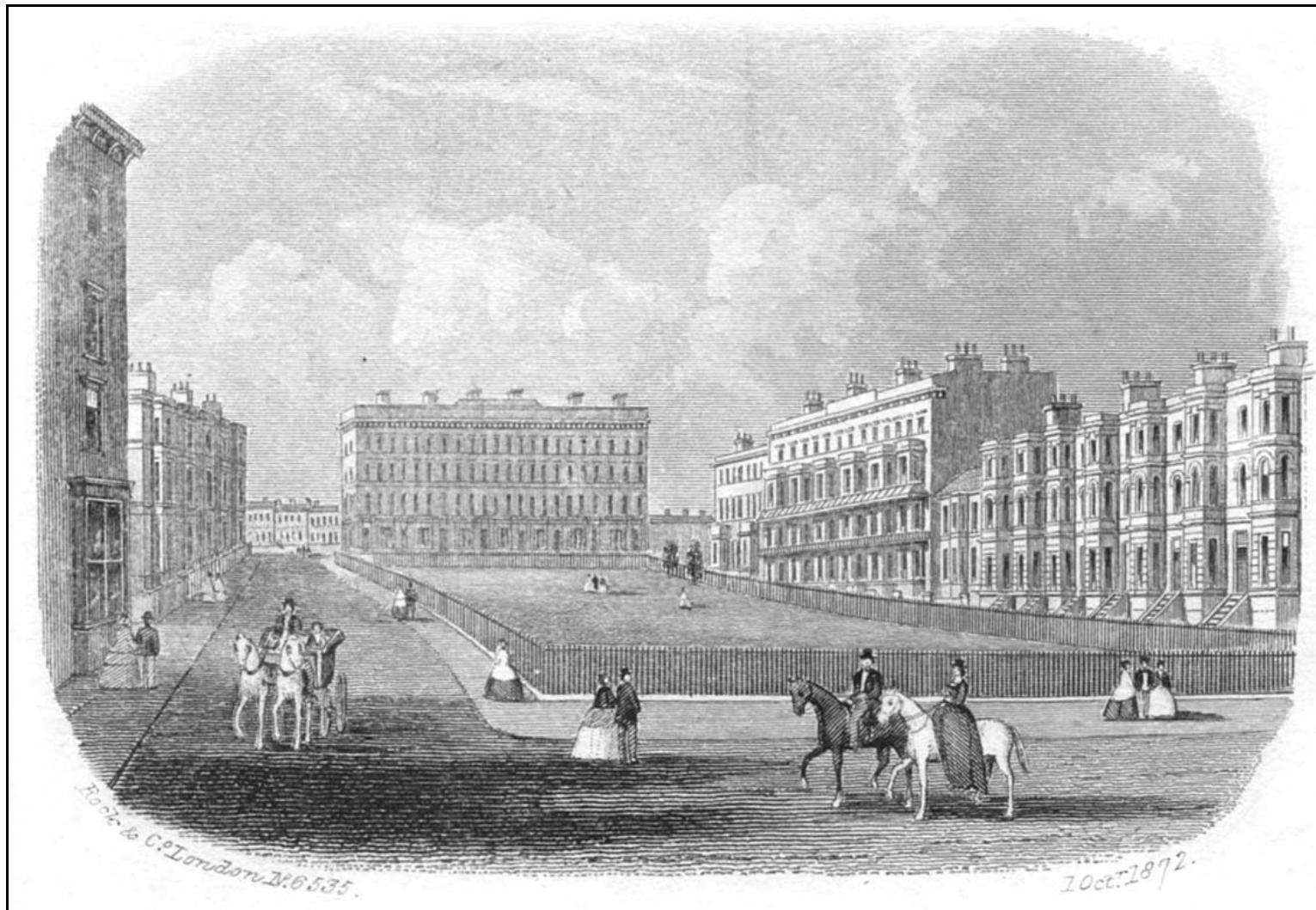
Kent Compendium of Historic Parks & Gardens – 2013 review of Dalby Square, Margate

Fig. 8 Plan of Dalby Square enclosure, July 2003 (in December 2003 planning application documents)



Kent Compendium of Historic Parks & Gardens – 2013 review of Dalby Square, Margate

Fig. 9 'Warrior Crescent and Ethelbert Square' (1872) – engraved vignette, Rock and Co



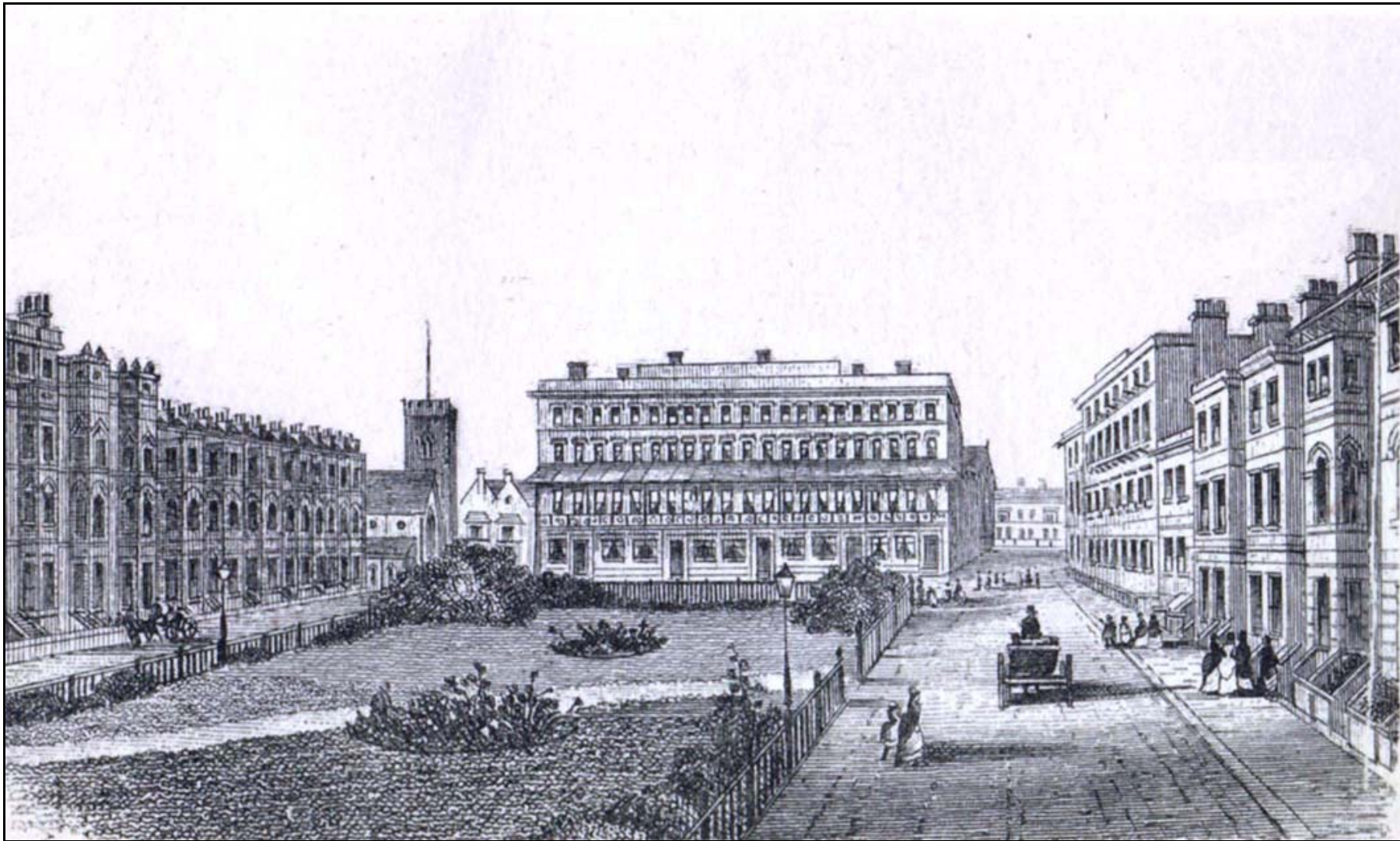
Kent Compendium of Historic Parks & Gardens – 2013 review of Dalby Square, Margate

Fig. 10 'Dalby Square, Margate' (undated) – engraved vignette, J.S. and Co.



Kent Compendium of Historic Parks & Gardens – 2013 review of Dalby Square, Margate

Fig. 11 'Warrior Crescent, Margate' (1877) – engraved vignette, John Newman and Co



Kent Compendium of Historic Parks & Gardens – 2013 review of Dalby Square, Margate

Fig. 12 “Dalby Square, Margate” (1904) – postcard, view from the north-west



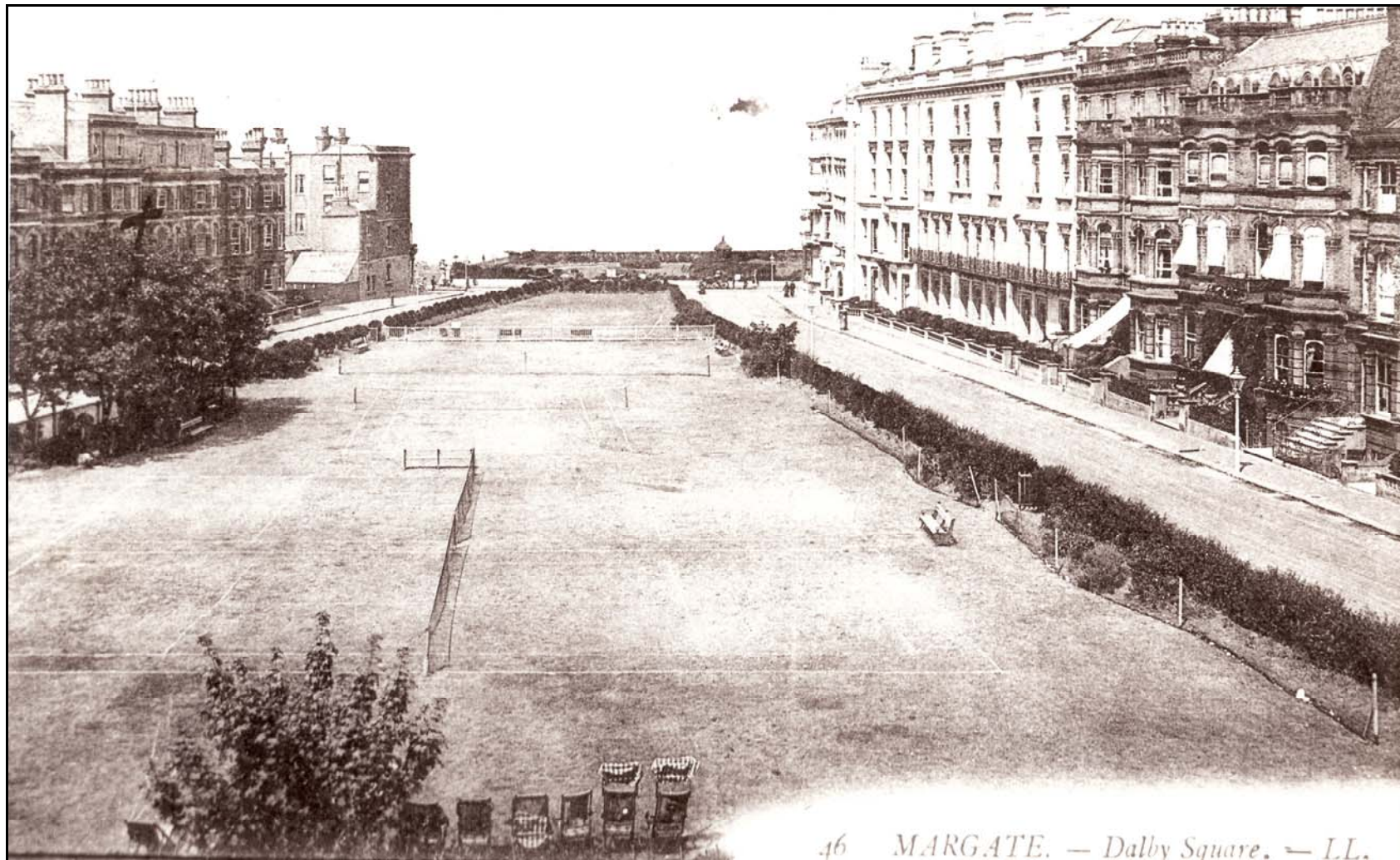
Kent Compendium of Historic Parks & Gardens – 2013 review of Dalby Square, Margate

Fig. 13 “Dalby Square, Cliftonville” (1907) – postcard, view from the north



Kent Compendium of Historic Parks & Gardens – 2013 review of Dalby Square, Margate

Fig. 14 “MARGATE *Dalby Square – L.L.*” (c1907) – postcard, aerial view from the south



Kent Compendium of Historic Parks & Gardens – 2013 review of Dalby Square, Margate

Fig. 15 “View from Windsor Hotel, Cliftonville” (c1923) – postcard, aerial view from the south-east



Kent Compendium of Historic Parks & Gardens – 2013 review of Dalby Square, Margate

Fig. 16 “Hotel Mediterranean”, 17-19 Dalby Square (c1975) - postcard



Kent Compendium of Historic Parks & Gardens – 2013 review of Dalby Square, Margate

Fig. 17 Photograph of Hotel Mediterranean, 17-19 Dalby Square (c1975)



Kent Compendium of Historic Parks & Gardens – 2013 review of Dalby Square, Margate

Fig. 18 Garden enclosure showing top terrace to the south-west, July 2012



Kent Compendium of Historic Parks & Gardens – 2013 review of Dalby Square, Margate

Fig. 19 Garden enclosure showing second and third terraces to the west, July 2012



Kent Compendium of Historic Parks & Gardens – 2013 review of Dalby Square, Margate

Fig. 20 Garden enclosure showing third terrace and children's playground to the north, July 2012



Kent Compendium of Historic Parks & Gardens – 2013 review of Dalby Square, Margate

Fig. 21 Aerial view of garden enclosure (north) from 30 Dalby Square, February 2013



Kent Compendium of Historic Parks & Gardens – 2013 review of Dalby Square, Margate

Fig. 22 Aerial view of garden enclosure (centre) from 30 Dalby Square, February 2013



Kent Compendium of Historic Parks & Gardens – 2013 review of Dalby Square, Margate

Fig. 23 Garden enclosure showing top terrace to the south-west, and Dalby Terrace, February 2013



Kent Compendium of Historic Parks & Gardens – 2013 review of Dalby Square, Margate

Fig. 24 Garden enclosure showing top terrace to the north-east, February 2013



Kent Compendium of Historic Parks & Gardens – 2013 review of Dalby Square, Margate

Fig. 25 Garden enclosure showing top terrace to the south-east, February 2013

