

# The Clock House

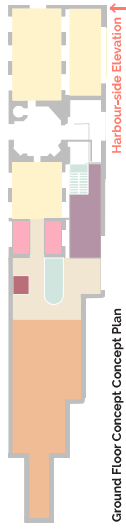
Thames District Council are working to deliver a community and commercial initiative to restore and celebrate the Grade II\* designated Clock House building, anchoring Pier Yard as the heart of Ramsgate Royal Harbour. Drawing on a lengthy and multi-faceted maritime history the scheme will entice the Harbour, broadening and diversifying participation with local history and the community.

Ramsgate Royal Harbour, significant for its contribution to civil engineering, commercial shipping and military campaigns, tells the story of this nation's connection to the sea, including the title of Royal Harbour, bestowed by George IV, the only mainland harbour to have been so honoured. The rejuvenated Clock House will house events and exhibition spaces, complemented with a hospitality space, drawing inspiration from past associations, while looking towards the future. The Clock House will make local history accessible and inspire future generations with stories that honour harbour events, providing opportunities for learning, skills development and volunteering. Reflecting on our contemporary community heritage, this scheme will support pathways to training and employment, supporting the local economy and trade partners.

The project will return activity to The Clock House museum, protecting existing collections and reinvigorating the commercial use of the building with additional hospitality facilities. Both museum and hospitality spaces will benefit from uninterrupted 180 degree views across the outer Harbour. Conserving The Clock House as a Heritage Hub will provide a compass point for visitors and residents which points to the story of Ramsgate Royal Harbour's past, present and future.



Pier Yard Elevation ↓



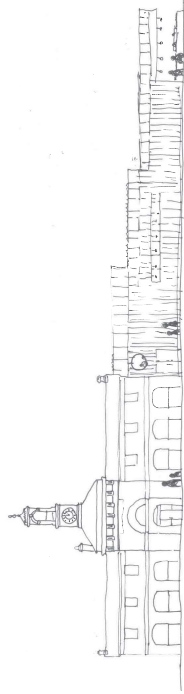
Ground Floor Concept Plan

Harbour-side Elevation ↑

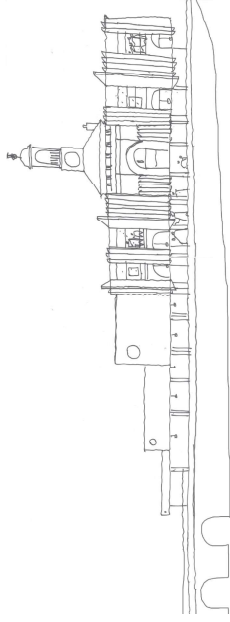


First Floor Concept Plan

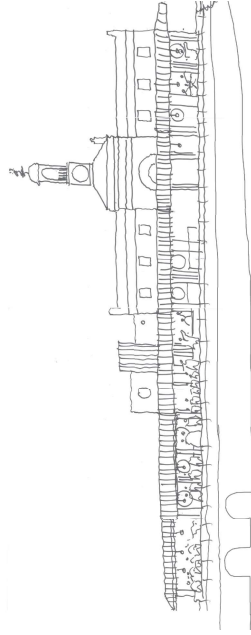
Harbour-side Elevation ↑



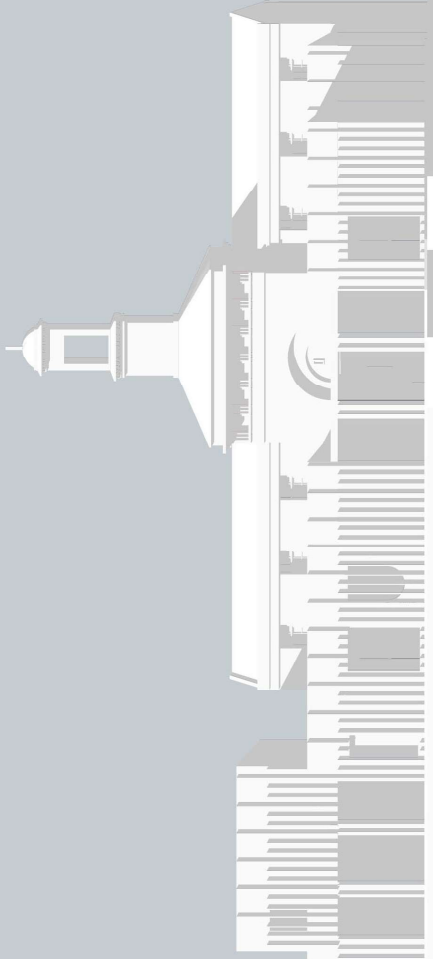
Early Pier Yard Elevation Concept Sketch



Early Harbour-side Elevation Concept Sketch



Early Harbour-side Elevation Concept Sketch



# The Clock House

## The Ambition

**“To be the epicentre of culture and heritage in Ramsgate - a unique signature experience in Kent.”**

To celebrate the maritime history of Ramsgate.



To be an inspiring resource for local schools and education groups.



To connect the stories of Ramsgate together - compelling visitors to explore further.



To create a gateway to the coast and its abundant nature and ecology.



A vibrant community hub for local residents.



To create a noteworthy dining experience.



## The Journey



MAP



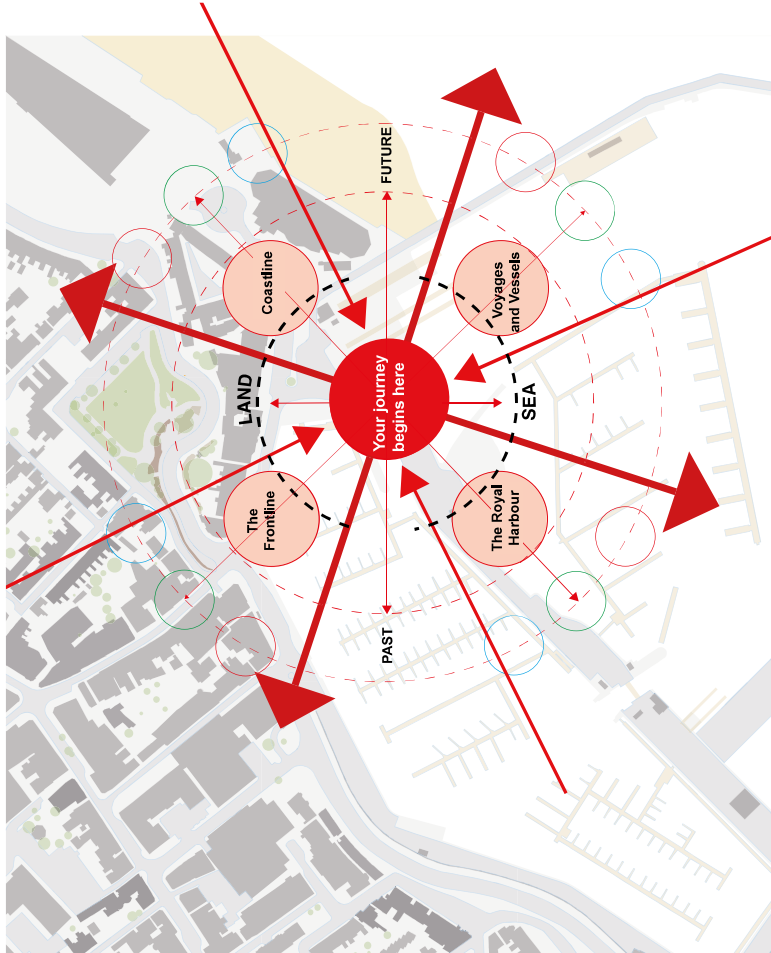
PLAY



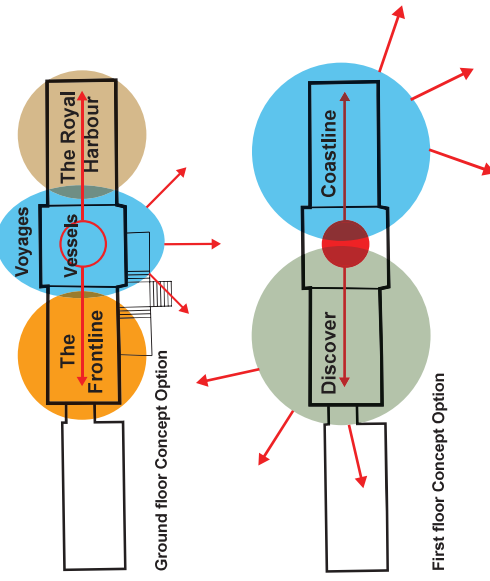
FRAME



DISCOVER



## The Stories



## The Audience



# Pier Yard

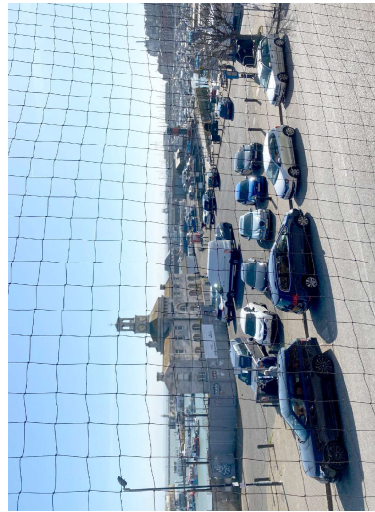
Previously the centre of harbour business, Pier Yard will be reimagined to accommodate markets, outdoor events and the entry point to the harbour and The Clock House Heritage Hub.

Its current use as car parking and vehicular access to the Cross Wall divides this area, reducing its relationship to the pier and the pedestrianised area around the obelisk. It is uninviting and creates a hazard for pedestrians. Instead, Pier Yard will showcase Ramsgate's rich harbour views, Water features and tree planting will bring natural shading and cooling to the air during summer months. Sheltered seating areas will ensure Pier Yard is useable throughout the year.

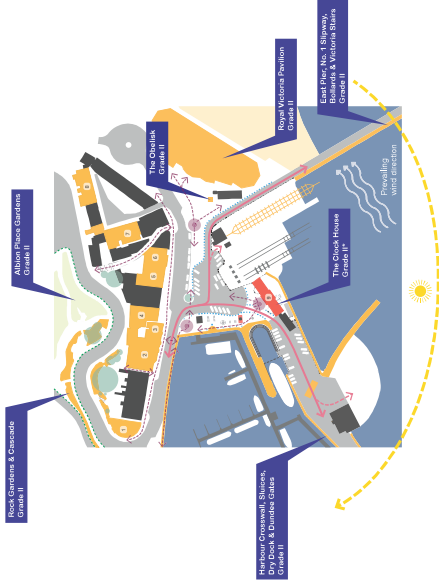
The design proposals for Pier Yard will reference the site's rich maritime history and act as a starting point for a wider exploration of Ramsgate and the Eastern Kent Coast. The space will be enlivened with landscaping, potential commercial activities, and extend the possibility to extend the Museum offering at The Clock House into the public realm, creating an attractive outdoor space for visitors and to provide wayfinding into the Ramsgate Royal Harbour.



Photograph - by drone of the Clock House and slipways from the east.

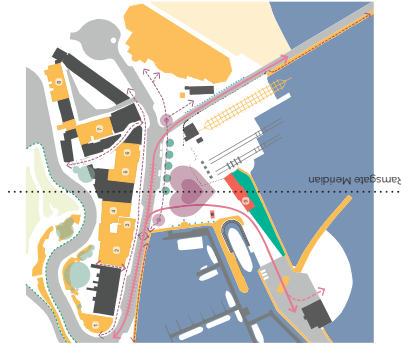


Photograph - view from Council offices of Pier Yard



## Current problems with Pier Yard

- Pier Yard is dominated by car parking. The public realm is poor quality, tired and cluttered, which detracts from the character and setting of The Clock House, Dry Dock and Conservation Area.
- Car parking and vehicular access through Pier Yard's centre, bring pedestrians and vehicles into conflict.
- The current design and layout fail to tell the story of the site's heritage or take advantage of its unique position on the edge of the harbour and boat repair yard.

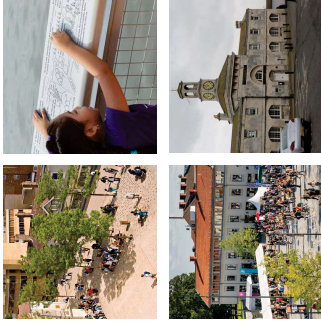


## Future proposals to address the problems

- Realignment of the vehicular access and routes to create a central car-free, civic space, which also improves the setting of The Clock House and provides space for events and engagement with the site.
- Improved pedestrian access of Harbour Parade will provide safe and more enjoyable route for visitors to Pier Yard and the waterfront. Conversion of the parking lay-by to a drop-off point avoid the need for cars to enter Pier Yard
- The design will reference the site's maritime history and act as a starting point for wider discovery of Ramsgate.

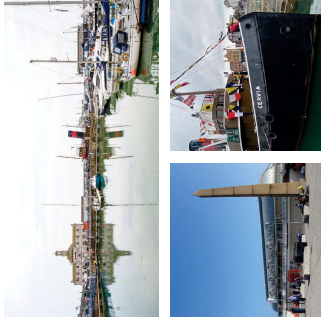
- Key**
- Unlisted buildings
  - Grade II listed
  - Grade II\* listed
  - Space on seaward side for building extension
  - Vehicular access
  - Pedestrian access
  - Arrival/orientation point
  - Black granite war memorial
  - Proposed tree planting
- NATWEST Bank, Grade II (13356979)
  - The Castle Hotel, Grade II (0885380)
  - The Castle Hotel, Grade II (0885380)
  - Former Alexandra Hotel (0886930)
  - The Clock House, Grade II (0885388)
  - The Clock House, Grade II (0885388)
  - No. 1 to 6, Grade II (13356058)
  - No. 7 to 14, Grade II (0885310)
  - The Clock House, Grade II (13356295)

## Uses



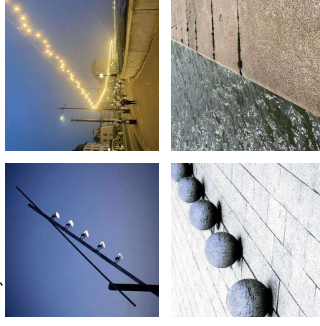
- **Activities** - a space for enjoying the harbour, fairs, markets, exhibitions and boat repair work
- **Setting** - an open space that celebrates the architectural quality of the Clock House, Dry Dock and Harbour
- **Heritage** - a space that celebrates the harbour's stories and provides the starting point for exploring the area.

## Views and Vistas



- **Unique position** - taking advantage of the site's unique position on the edge of the harbour, looking both seaward and landward
- **Focal points** - celebration and reinforcement of focal points, such as the historic slipways, Dry Dock, Clock House, obelisk, seaward horizon, harbour and quayside.

## Safety



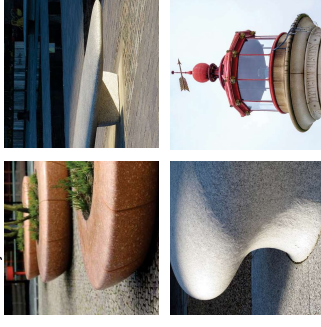
- **Lighting** - street lighting to create ambience and improve safety
- **Demarcation** - bollards to delineate routes and protect pedestrians from vehicles
- **Guarding** - Guarding to protect against falls

## Pedestrian Friendly



- **Shared surfaces** - allowing people to move freely and interact without feeling intimidated by vehicles
- **Parking** - drop-off and disabled parking only
- **Furniture** - inclusively designed and arranged to encourage people to dwell, socialise and enjoy the location

## Materiality



- **Granite and Sandstone** - based on precedent, found locally in structures such as the Ramsgate Lighthouse, Powder store and quayside units
- **Theme** - naval aesthetic based on robust and pragmatic materials and details to withstand the maritime climate
- **Colours** - bright, cheerful, contrasting palette

## Microclimate and Planting



- **Water** - water feature to cool the air and for play
- **Shade** - trees and canopies to provide shade
- **Shelter** - designed to offer protection from the wind
- **Planting** - hardy species, tolerant of coastal conditions